



Anthology, Inc.

Recalibrating DLX label printer

Overview/Summary

Occasionally the printed text on the labels may get out of alignment. This can happen after putting in a new roll of labels, or if the leading strip is not completely straight as it comes out of the printer. The following steps may help correct calibration issues.

Re-seating label strip

If you recently replaced the roll of labels you may need to re-seat the strip as it comes out of the printer. Open the top cover for the label roll. Use your thumbs to slide the latches up on the printhead mechanism; this will release tension on the label strip. Hold the roll with one hand while pulling the label strip out exactly straight and use the other hand to snap down the printhead mechanism. If the label strip coming out of the printer is not exactly straight the labels will start to print the text tilted and will become misaligned over time.



Importing the custom label formats

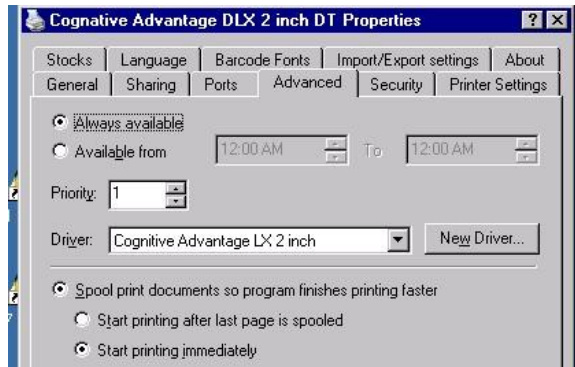
In case the label format has been accidentally changed, you can re-import the format to try and correct. If you have problems with labels not aligning or printing correctly you may need to redo this step.

1. Go back to the Printers folder. Right click on your label printer and choose Printer Properties if a Win7 machine or just Properties if a Win XP machine.
2. Go to the Advanced tab
3. Go to the Printing Defaults button on the lower left
4. Go to the Import/Export Settings tab
5. Click on the Import button
6. Browse to the C:\Program Files (x86)\Anthology\Tools folder on the server where the various format files are stored.
7. There are currently four configurations you can choose from. If your store does Used Books with serialization you should use the OneUp13. If you do not plan on printing the 2 up labels for smaller items you should use the OneUp format.
 - a. OneUp12CharSku.drs- prints using standard font for 1 up labels, good for UB stores using ISBN10 and serialization and new book labels. This is the recommended standard for most stores.
 - b. OneUp13PlusCharSku.drs- prints with smaller font to allow longer sku's such as ISBN13 with serialization.
 - c. TwoUp6Charsku.drs – prints using a larger font for 2 up labels. Barcodes print larger for better readability, but is limited to 6-character SKU on a 2up label.
 - d. TwoUp12CharSku.drs – prints using a smaller font. Barcodes print smaller, but is limited to a 10 or 12 character SKU that will fit on a 2up label.
8. You may assign different files to different workstations if you need to print one label size from a particular workstation and another size from a different computer.
9. Wait for a few moments to ensure the Import has completed then OK back out of both screens.
10. Go to Visual Anthology at each station, Master Files | Stations | Printing tab. Reselect the new printer for every label type listed (inventory, customer, or vendor). F10 Save Changes.

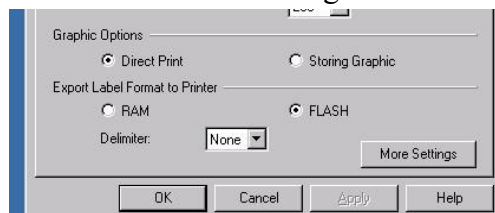
Forcing Recalibration

At the workstation that has the label printer physically connected to it:

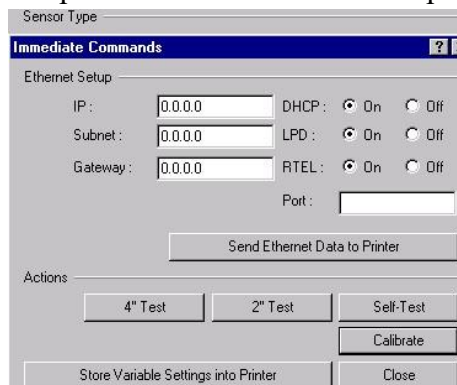
1. Click the Start button
2. Choose Devices & Printers from the expanded menu
3. Once this screen opens locate the Advantage DLX icon
 - a. Right click the icon
 - b. Choose Printer Properties (if Win XP just “Properties”)
 - c. Select the Advanced Tab



- d. Click the “Printing Defaults” button on bottom left of Advanced tab
- e. On the new Printing Defaults window click the Advanced Tab, select the “More Settings” button on the bottom right.



- f. On the new Immediate Commands window, click the Calibrate button on bottom right. Your printer should feed out a couple of labels.



- g. After it has finished, turn the label printer off for 15 seconds then back on. Press the Feed button once to advance one label and finish the calibration process.